



# I-4 Beyond the Ultimate

International Drive Business Improvement District

January 26, 2023



# Agenda

- **I-4 Beyond the Ultimate Overview**
- **I-4 BtU South Near-Term Improvements**
  - FPID 441113-1 & -3: I-4 at Daryl Carter Pkwy Interchange
  - FPID 444315-1 & -3: I-4 at Sand Lake Rd Interchange
  - FPID 448914-1 & 449771-1: I-4 at SR 535 Interchange
  - FPID 448915-1: SR 528 / I-4 Off Ramp Widening
- **Next Steps**

# I-4 Beyond the Ultimate

- Two 20-mile sections on either end of I-4 Ultimate

## I-4 Beyond the Ultimate North:

East of State Road (S.R.) 434 to east of S.R. 472

## I-4 Beyond the Ultimate South:

West of U.S. 27 to west of S.R. 435/  
Kirkman Road

- Designing and building a better I-4 through Central Florida
- Phased approach to meet operational needs with available funding

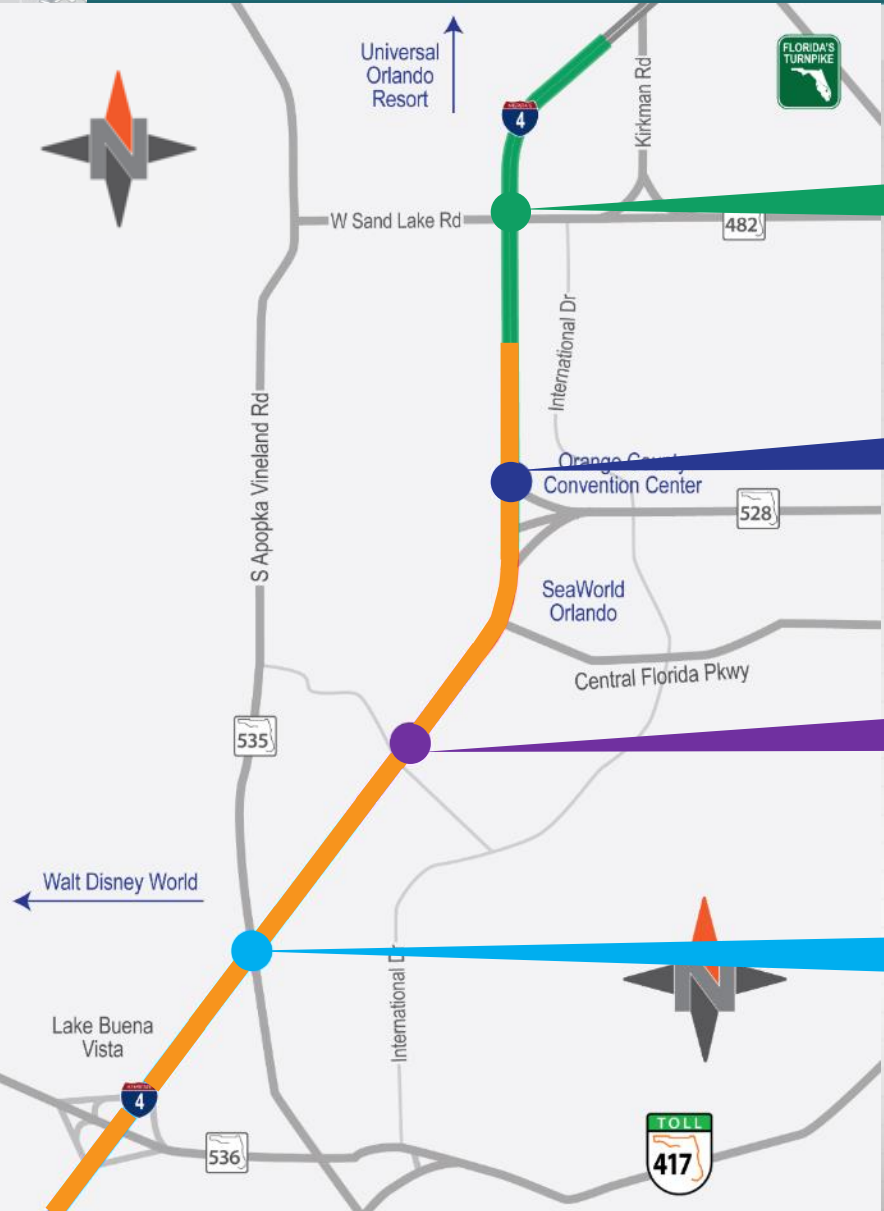
I-4 Beyond the Ultimate North

I-4 Ultimate

I-4 Beyond the Ultimate South



# I-4 BtU South – Near term improvements



**444315-1:** I-4 at Sand Lake Rd. (S.R. 482) Interchange

**448915-1:** S.R. 528 (Beachline Expy.) Ramp Widening

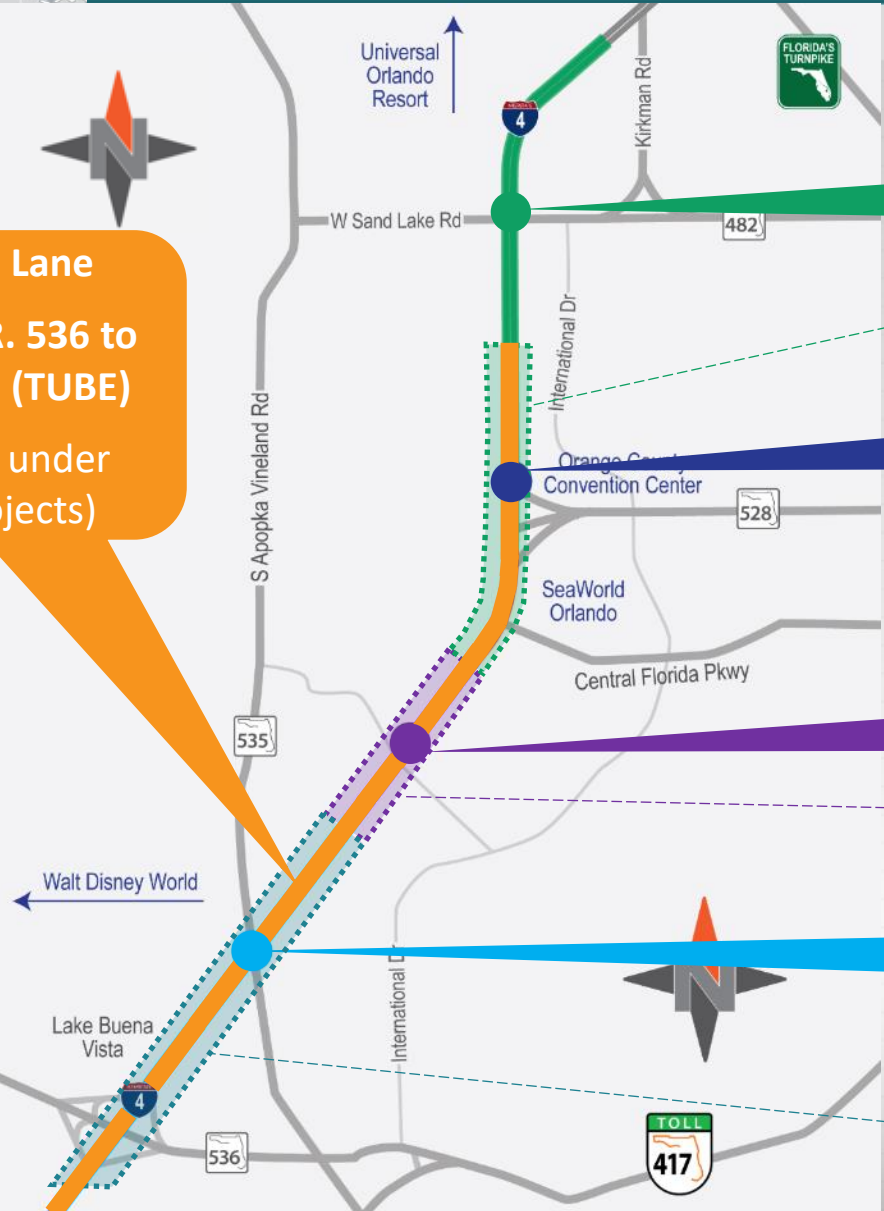
**441113-3:** I-4 at Daryl Carter Pkwy. Interchange

**448914-1:** I-4 at S.R. 535 Interchange

# I-4 BtU South – Near term improvements



**WB Express Lane**  
from W. of S.R. 536 to  
W. of S.R. 482 (TUBE)  
(constructed under  
multiple projects)



**444315-1:** I-4 at Sand Lake Rd. (S.R. 482) Interchange

**444315-3:** WB Express Lane SR 536 to SR 528

**448915-1:** S.R. 528 (Beachline Expy.) Ramp Widening

**441113-3:** I-4 at Daryl Carter Pkwy. Interchange

WB Express Lane Daryl Carter Pkwy to Central Florida Pkwy

**448914-1:** I-4 at S.R. 535 Interchange

**449771-1:** WB Express Lane S.R. 536 to Daryl Carter Pkwy



# I-4 BtU South – Near term improvements

**Project Number 444315-1:**

***I-4 at Sand Lake Road Interchange Improvements***

**&**

**Project Number 444315-3:**

***I-4 WB Express Lane W S.R. 536 to W S.R. 528***



# I-4 at Sand Lake Rd Interchange Improvements

## Improvements at Sand Lake Rd. Interchange Include:

- Diverging Diamond Interchange
- Elimination of Left turn WB Sand Lake Rd. to SB Turkey Lake Rd.
- Access to Turkey Lake Rd. from I-4
- Pedestrian and Bicycle Facilities
- Enhanced Aesthetics
- G/W FPID: 444315-3 (Tube from W of SR 528 to W of CFP)





# I-4 at Sand Lake Rd Interchange Improvements



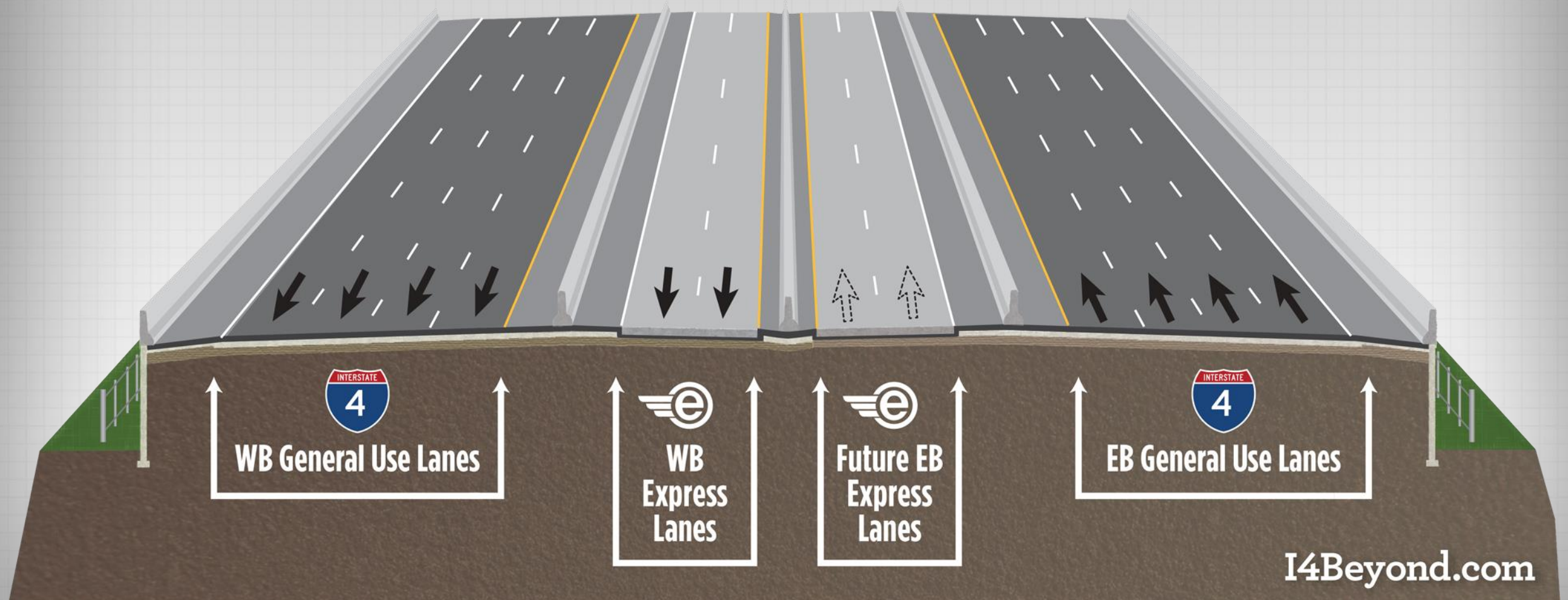
Anticipated Construction Starting in Summer 2023





# I-4 at Sand Lake Road (S.R. 482) and WB I-4 Express Lane Extension

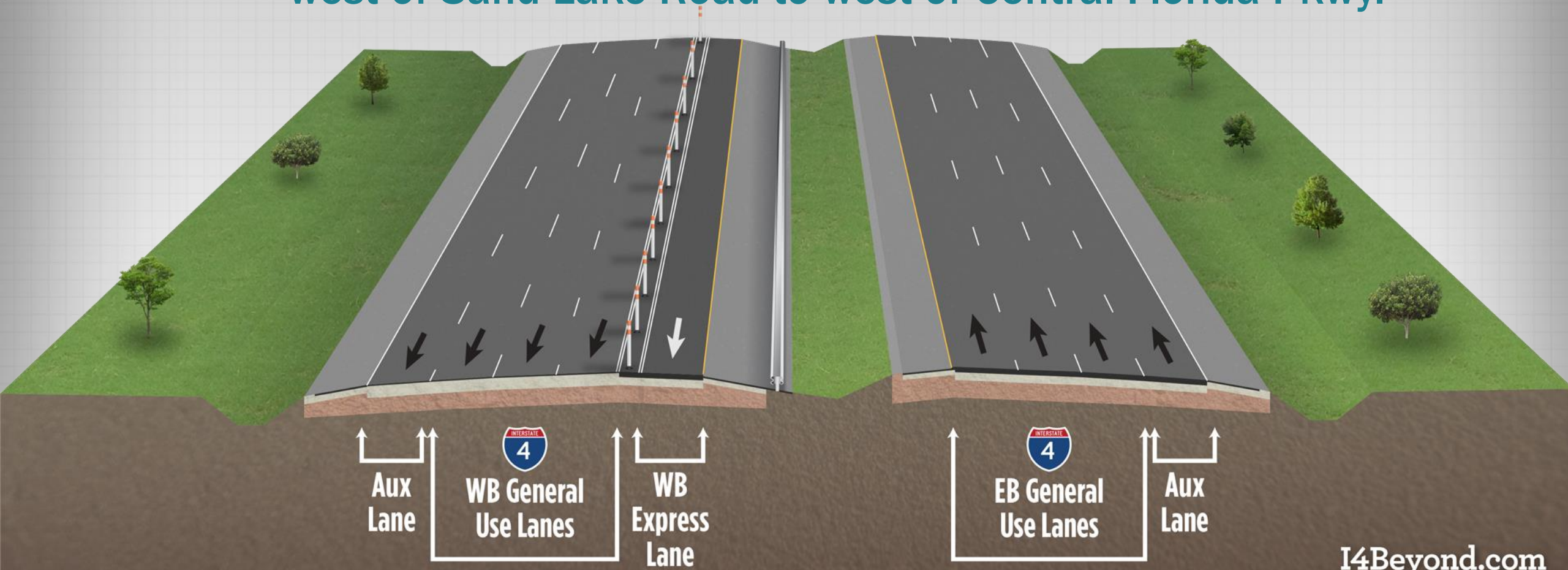
Typical section: Ultimate section (includes 2 Express lanes in each direction\*) from I-4 Ultimate to west of Sand Lake Road





# I-4 at Sand Lake Road (S.R. 482) and WB I-4 Express Lane Extension

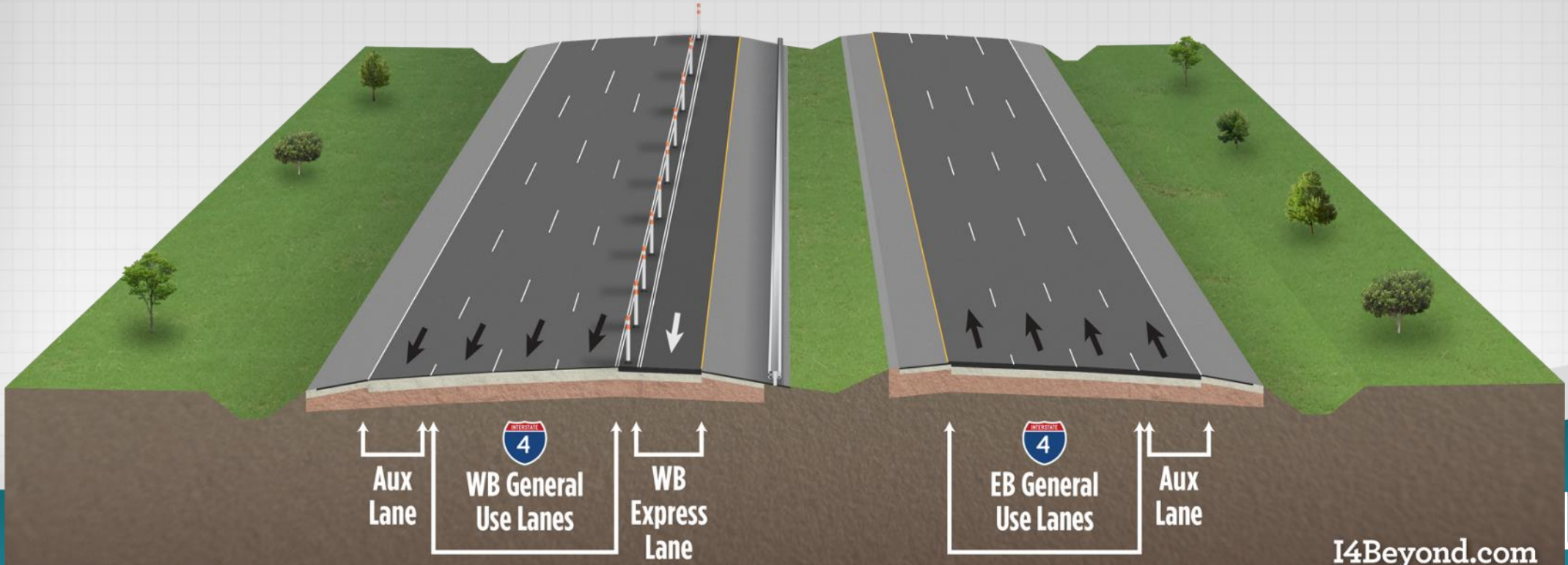
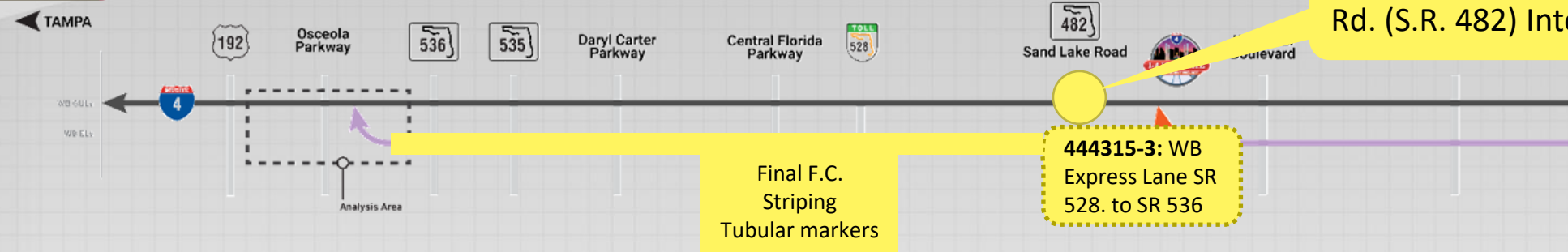
Typical section: Interim express lane in the WB direction from west of Sand Lake Road to west of Central Florida Pkwy.





# WB Express Lane

## From W of Sand Lake Rd to W of SR 536





# FPID 444315-1: I-4 at Sand Lake Rd Interchange

## Design-Build Procurement Schedule

Technical Proposals: October 12, 2022

Bid Opening: December 13, 2022

Anticipated Award: Jan 2023



# I-4 BtU South – Near term improvements

- **Project Number 441113-1 & -3:**  
*I-4 at Daryl Carter Pkwy Interchange*
- **Project Number 448914-1 & 449771-1:**  
*I-4 at SR 535 Interchange:*
- **Project Number 448915-1:**  
*SR 528 / I-4 Off Ramp Widening*



# FPID 441113-1: I-4 at Daryl Carter Pkwy

- Partial Diverging Diamond Interchange
- WB on-ramp will be built with I-4 BtU project in the future
- EB on-ramp braids over a future CD system
- Ponds built for ultimate capacity
- Includes tube from W of CFP to W of Daryl Carter Pkwy

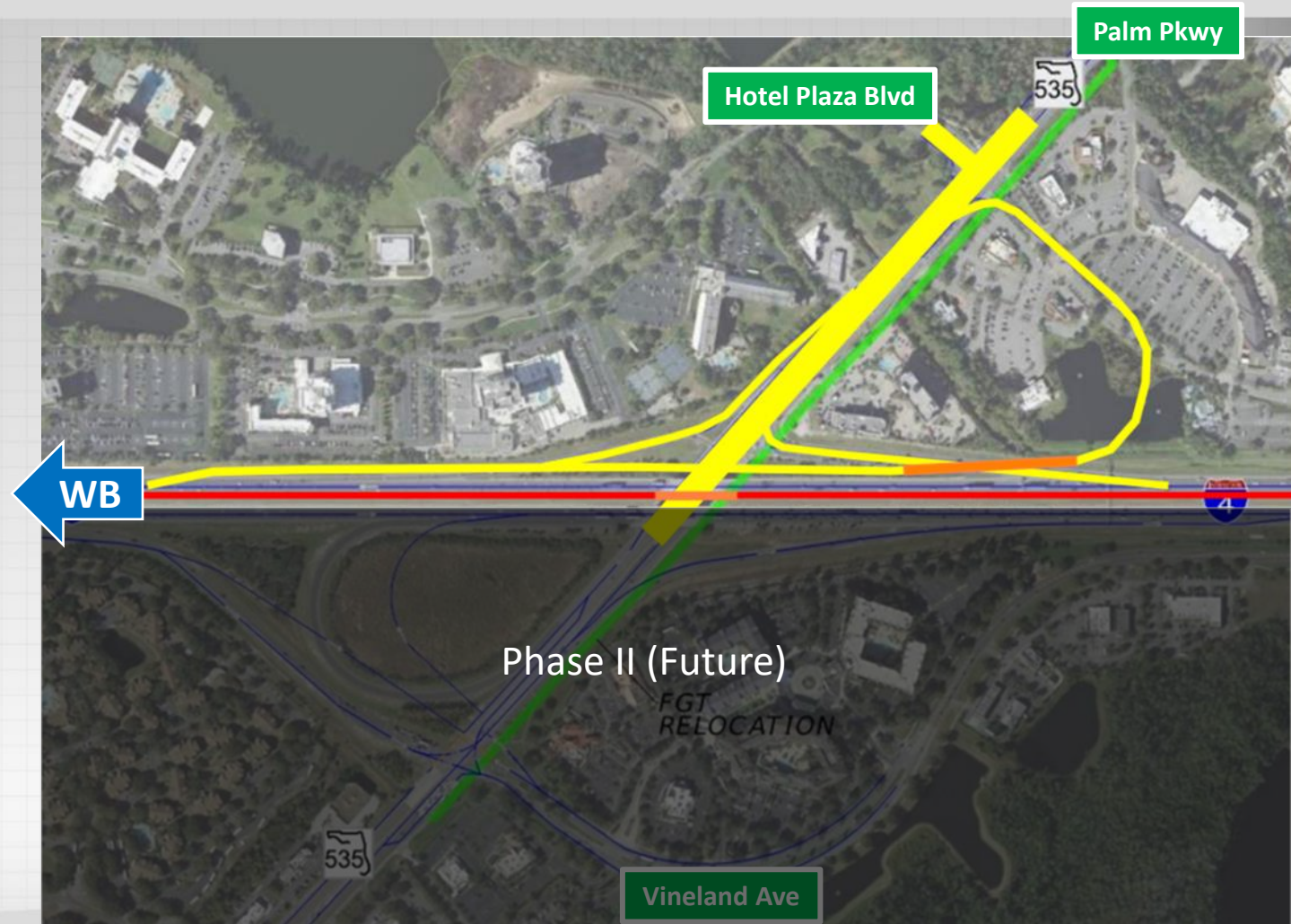




# 448914-1: I-4 at S.R. 535 Interchange Phase I

## Phase I

- New loop ramp from NB SR 535 to WB I-4
- Realign and reconstruct WB I-4 off-ramp to SR 535
  - Additional ramp storage
- Widening along NB SR 535
  - Additional storage for left and right turns at Palm Pkwy
- Anticipated Construction starting in Fall 2023





# Next Steps

- Continue overall BtU South and North Section project development
- Adjust approach and implementation plan as funding opportunities arise
- Continue stakeholder outreach
- Coordination with Brightline activities





# I4Beyond.com





# Pedestrian and Bicyclist Movements on Sand Lake Road (State Road 482) at Interstate 4 (I-4)

View:  
Heading  
east on  
Sand Lake  
Road

